



*Let's talk about improving
your outdoor environment.*

FULL SERVICE
LANDSCAPE DESIGNER
PROFESSIONAL GARDENER



ABOUT KATHERINE

For over a decade, Katherine Farhadian has brought her vision of exceptional design to a variety of landscape projects. She is a hands-on designer that helps her clients create their dreams for their space. She brings professionalism and a collaborative spirit to all projects, enabling her to interact well with her clients, architects, landscape contractors and other design professionals. She remains involved in the project from inception through completion, ensuring the vision is realized and her clients are fully satisfied.

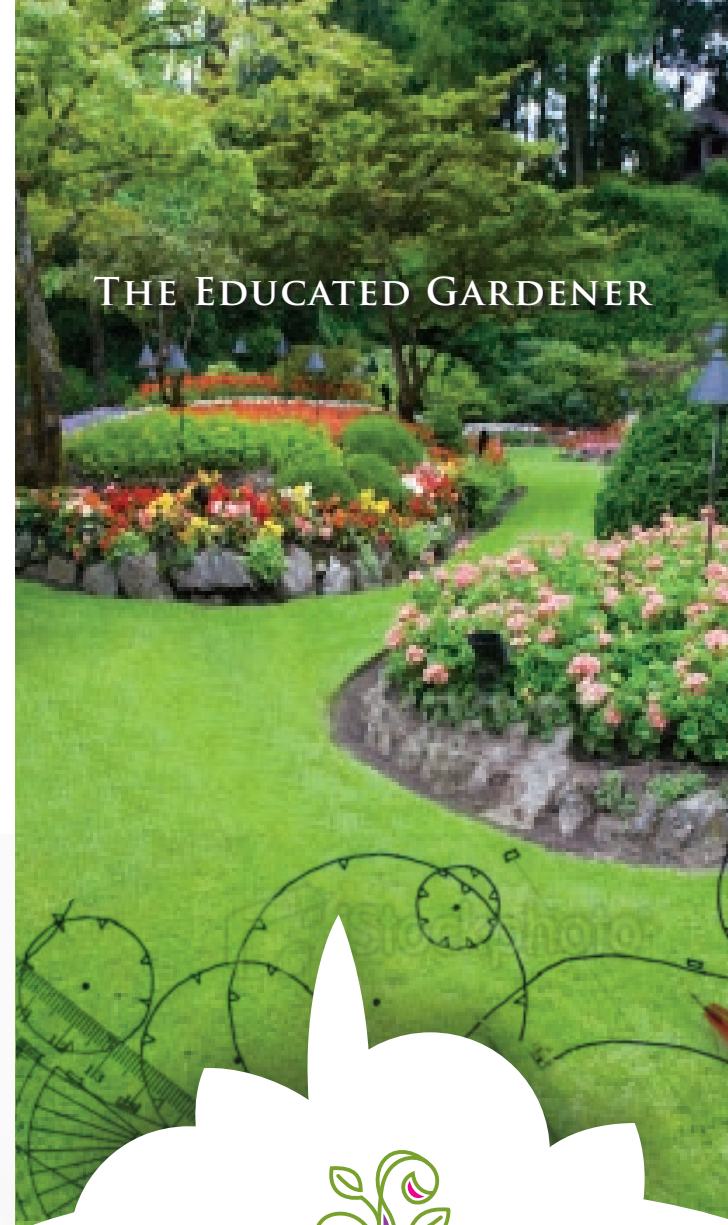
Katherine graduated from Yale University School of Forestry and Environmental Studies (MFS), where she focused on social ecology. Social Ecology is the study of how humans feel toward and interact with the natural world. As a native North Carolinian she completed her undergraduate work at North Carolina State University, *cum laude*, in landscape horticulture (BS).

Throughout Katherine's career she has worked on landscape architectural projects in the commercial, municipal and residential sectors including the Charlotte-Douglas International Airport, the North Carolina Zoo Desert Pavilion, Balboa Park in San Diego, and in collaboration with the City Horticulturist for the City of Charlotte. Most recent projects include landscape design in the faculty housing neighborhood at Westmont College and several private residences in Montecito, Santa Barbara and Goleta.



The Educated Gardener

805.637.2537
www.KatherineFarhadian.com



THE EDUCATED GARDENER



HORTICULTURIST · DESIGNER
GARDENER · CONSULTANT



Q&A with Katherine

My mature landscape is not reaching its potential, it is plain, boring, and tired-looking...

Sometimes a few well-placed accent plants, some pruning of larger shrubs and trees, or strategic placement of garden ornaments can give your landscape new pizzazz.

I have a garden style in mind, but don't know how to accomplish it...

A landscape plan, drawn on paper, is the answer. It can be a conceptual plan, a schematic plan, or a scaled, drafted plan that can be handed to a landscape contractor for installation.

I enjoy working in the yard, and buying and trying new plants but my landscape does not look so great because it lacks overall unity...

I share your enthusiasm! This is a common problem for those of us who love shopping at garden centers! By using some design principles, a solution can be obtained that satisfies your desire to enjoy new plants while making design-sense of your landscape.

How do I get the look I want in an area that has sun and shade?

There are a number of plants that can handle both sun and shade. Also, one can use similar-looking plants of different species to achieve a uniform look while meeting the cultivation needs of each.

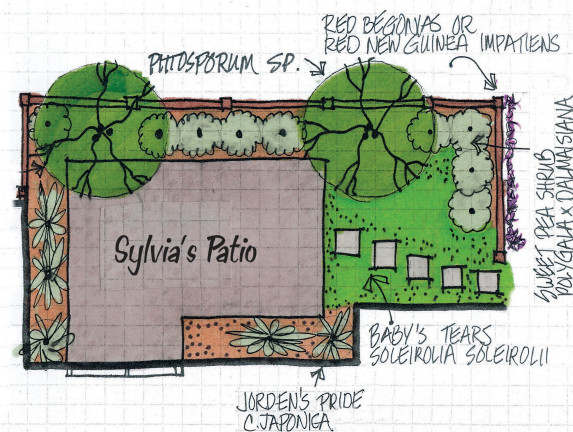
SERVICES OFFERED

LANDSCAPE CONTRACTOR
READY DESIGN PLANS
PLANT COMBINATION LISTS
SKILLED GARDENING
PLANT INSTALLATION
HOURLY CONSULTATION
PERSONAL ATTENTION
HORTICULTURAL RESOURCE
CONSULTANT



If you are looking to improve your yard, patio, garden, deck, weed patch, gravel pit, courtyard or any other outdoor space, I can help. I would enjoy walking around your property with you, discussing ideas and discovering plants that you like. I take a hands-on approach to helping you create an outdoor environment that has what you want while being well designed. A great design will be functional, aesthetically pleasing, and in line with your budget.

Together we will work to design an outdoor space that satisfies your lifestyle, whether that is playing with your kids, spending weekends barbecuing and relaxing or just enjoying your own personal oasis.



To see more schematics: www.katherinefarhadian.com